

In this section:

Pages

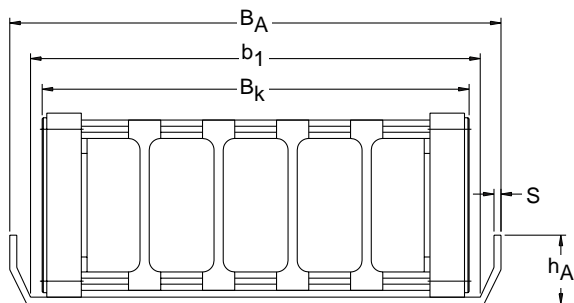
Support Trays	22.02
Guide Channels	22.03
Varitrak S Rolling Carriage Systems	22.04
Varitrak S Support Rollers	22.05
Carrier Data Development Sheet	22.06

Expand your
Accessories
 options prolong
 life system

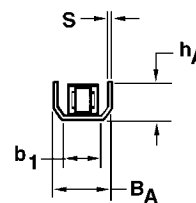
Support Trays

An even, flat and clear surface is necessary to ensure proper long-term durability of the cable and/or hose carrier. In the event such a surface is not available or when the carrier is elevated above ground level, a Support Tray should be used.

- B_A = Support tray section overall width
- b_1 = Support tray running surface width
- h_A = Support tray section side height
- B_i = The overall (section) width of the carrier
- S = Thickness of tray material
- B_k = Overall carrier (cross sectional) width



PLASTITRAK®, VERSATRAX®,
VARITRAK®, AND CONDUFLEX®



MICROTRAK® SUPPORT TRAY

SUPPORT TRAY SELECTION CHART

Carrier	b_1	B_A	h_A	S
0100	$B_k + 0.12$ (3)	$B_k + 0.60$ (15)	0.60 (15)	0.06 (1.5)
0200	$B_k + 0.20$ (5)	$B_k + 0.79$ (20)	0.79 (20)	0.06 (1.5)
0300	$B_k + 0.20$ (5)	$B_k + 0.79$ (20)	0.79 (20)	0.06 (1.5)
0400	$B_k + 0.24$ (6)	$B_k + 0.83$ (21)	0.79 (20)	0.06 (1.5)
0500	$B_k + 0.27$ (7)	$B_k + 0.87$ (22)	0.79 (20)	0.06 (1.5)
0600	$B_k + 0.27$ (7)	$B_k + 0.87$ (22)	0.79 (20)	0.06 (1.5)
0900	$B_k + 0.31$ (8)	$B_k + 1.10$ (28)	1.18 (30)	0.08 (2.0)
1200	$B_k + 0.39$ (10)	$B_k + 1.57$ (40)	1.57 (40)	0.12 (3.0)
MK & MT 0475	$B_k + 0.24$ (6)	$B_k + 0.83$ (21)	0.79 (20)	0.06 (1.5)
MC, MK & MT 0650	$B_k + 0.27$ (7)	$B_k + 0.87$ (22)	0.79 (20)	0.06 (1.5)
MC, MK & MT 0950	$B_k + 0.31$ (8)	$B_k + 1.10$ (28)	1.18 (30)	0.08 (2.0)
MC, MK & MT 1250	$B_k + 0.39$ (10)	$B_k + 1.57$ (40)	1.57 (40)	0.12 (3.0)
055	$B_k + 0.24$ (6)	$B_k + 0.83$ (21)	0.79 (20)	0.06 (1.5)
060	$B_k + 0.27$ (7)	$B_k + 0.87$ (22)	0.79 (20)	0.06 (1.5)
085	$B_k + 0.27$ (7)	$B_k + 0.87$ (22)	0.79 (20)	0.06 (1.5)
155	$B_k + 0.31$ (8)	$B_k + 1.10$ (28)	1.18 (30)	0.08 (2.0)
120	$B_k + 0.31$ (8)	$B_k + 1.10$ (28)	1.18 (30)	0.08 (2.0)
175	$B_k + 0.39$ (10)	$B_k + 1.57$ (40)	1.57 (40)	0.12 (3.0)

Guide Channels

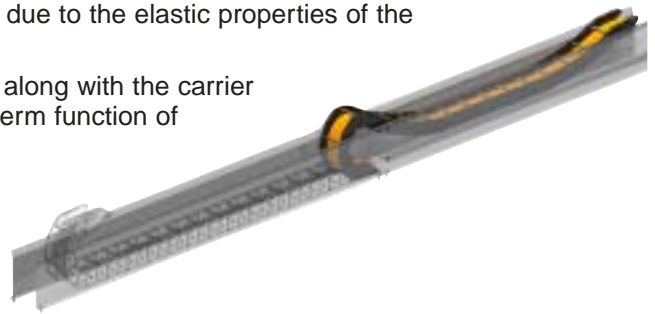
If the maximum allowable unsupported length of the carrier is exceeded, the upper section of the carrier is *designed* to rest, glide, or slide on the lower carrier section due to the elastic properties of the high strength nylon material.

The excellent coefficient of friction of the nylon material used along with the carrier design itself ensure that this action does not impair the long-term function of the cable and/or hose carrier.

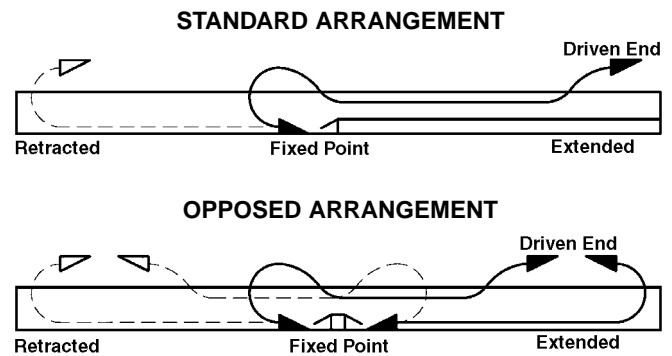
It is essential, however, that a KabelSchlepp Design Guide Channel is fitted — **please consult factory**.

In an opposing carrier design, a short insert is fitted to form a small bridge between the two fixed point connections.

Standard Material: 16 or 14 Gage Galvanized Sheet Steel
Maximum Section length: 10 feet (3.04 m).

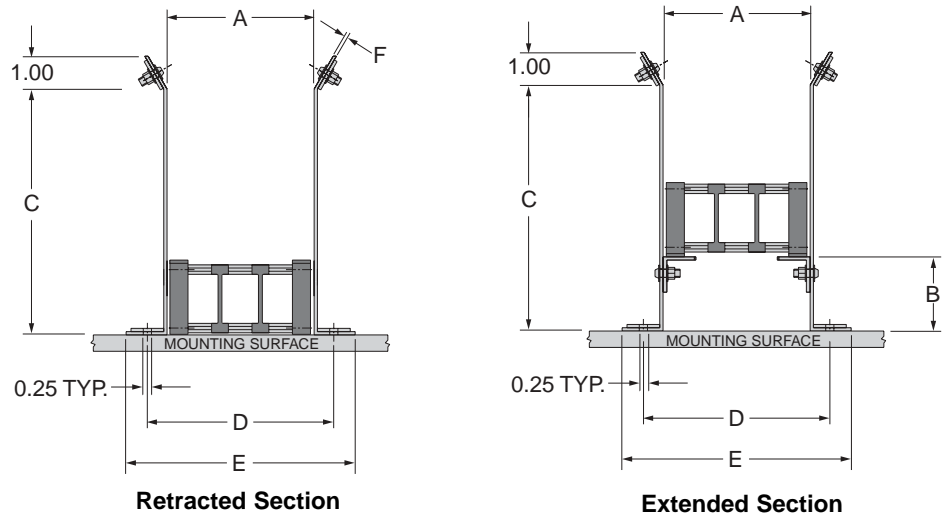


- A = Guide channel inside width
- B = Height from guide channel base to top of insert/sliding plate
- C = Height from guide channel base to start of flange
- D = Bolt hole centers — width
- E = Guide channel overall width
- F = Thickness of sheet metal



GUIDE CHANNEL ASSEMBLED SECTION VIEWS

- Available from stock
- Short lead/delivery times
- Replace individual pieces instead of whole sections



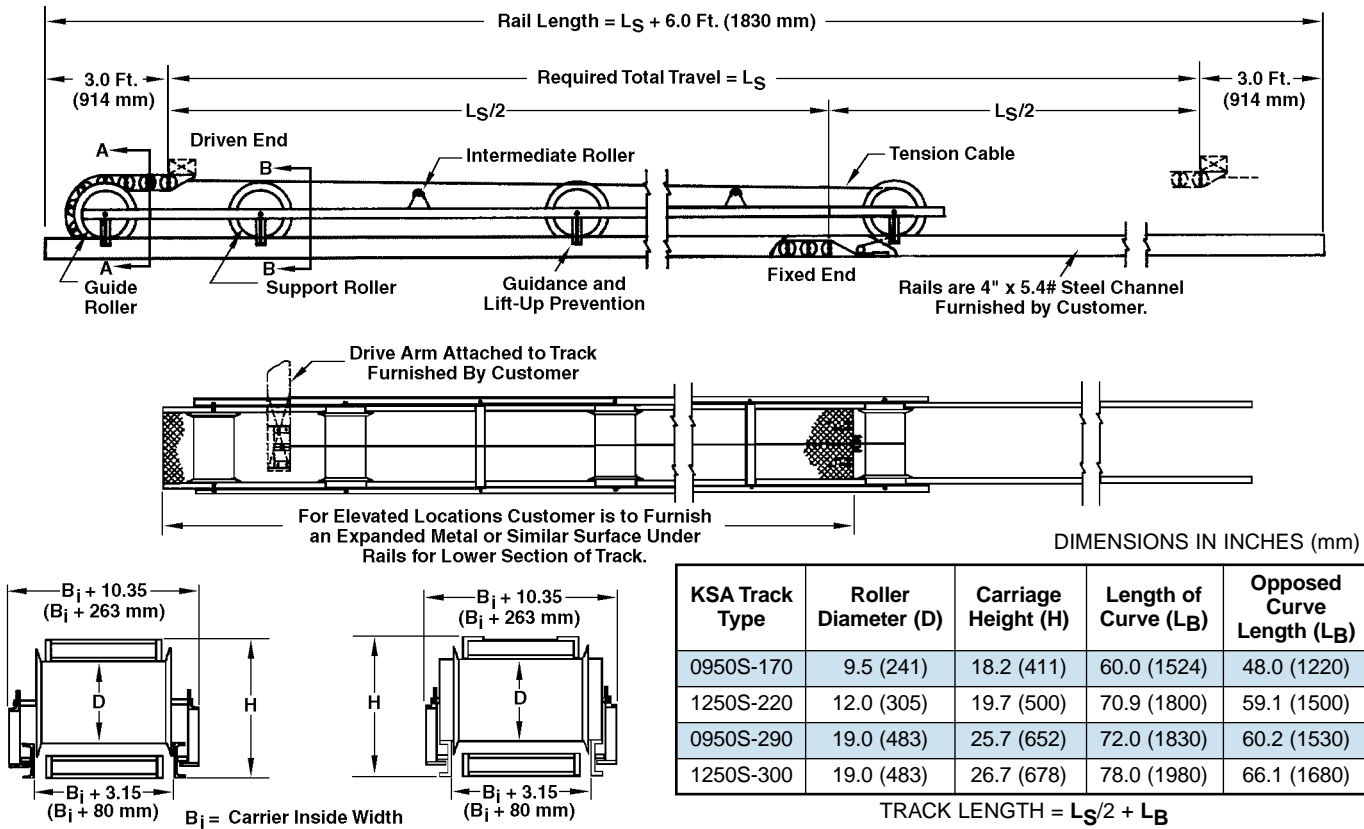
GUIDE CHANNEL SELECTION CHART

* Special slide plate necessary (consult factory)
** Special slide plate may be necessary (consult factory)

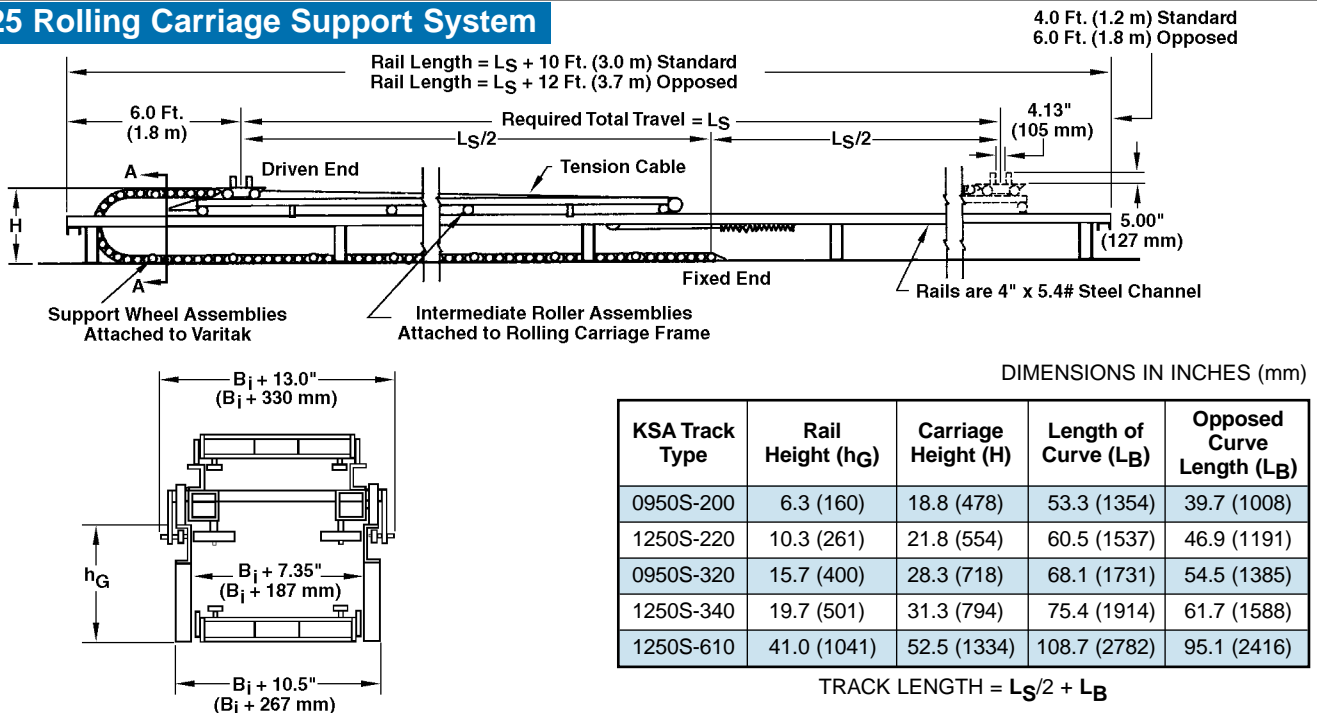
Carrier	0100*, 0200* & 0300**	0400	0500 & 0600	0900	1200 & 1600
A	$B_k + 0.12$ (3)	$B_k + 0.16$ (4)	$B_k + 0.20$ (5)	$B_k + 0.20$ (5)	$B_k + 0.24$ (6)
B	H_G of Carrier	H_G of Carrier	H_G of Carrier	H_G of Carrier	H_G of Carrier
C	5.00 (127)	5.00 (127)	7.50 (190.5)	10.00 (254)	12.00 (304.8)
D	$B_k + 1.32$ (33.5)	$B_k + 1.36$ (34.5)	$B_k + 1.40$ (35.6)	$B_k + 1.40$ (35.6)	$B_k + 1.44$ (36.6)
E	$B_k + 2.62$ (66.5)	$B_k + 2.66$ (67.6)	$B_k + 2.70$ (68.6)	$B_k + 2.70$ (68.6)	$B_k + 2.74$ (69.6)
F	0.06 (1.5)	0.06 (1.5)	0.08 (2.0)	0.10 (2.5)	0.10 (2.5)

Varitak® Series S Rolling Carriage for Extended Travel Lengths

RC-222 ROLLING CARRIAGE CARRIER SUPPORT SYSTEM



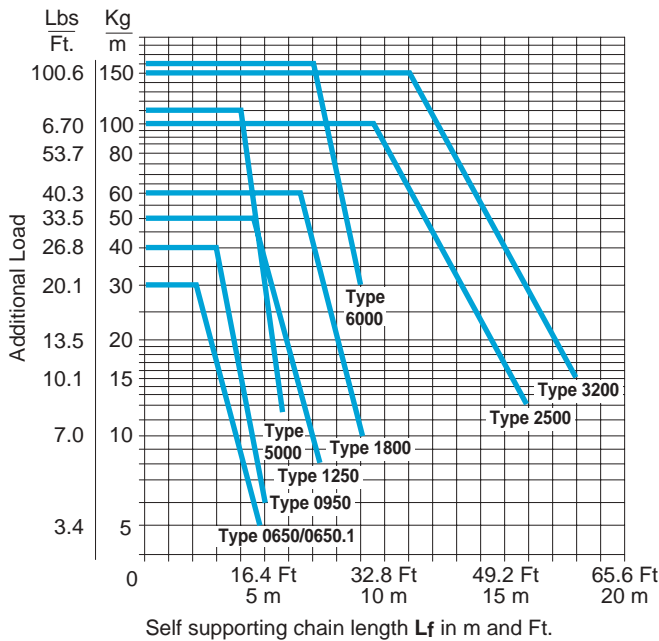
RC-225 Rolling Carriage Support System



Call KabelSchlepp's Solutioneers at **800.443.4216**
or email techhelp@kabelschlepp.com for design assistance

Support Rollers

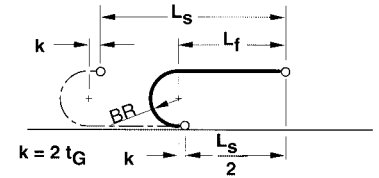
Self-Supporting Lengths for Standard Varitrak S Arrangements



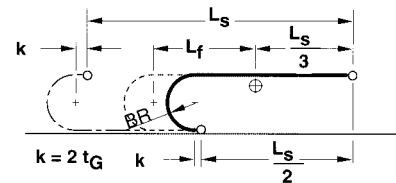
NOTE: Listed limits are in *maximum* feet and meters.

When Varitrak S Self-Supporting Lengths are Exceeded - Use KABELSCHLEPP Support Rollers

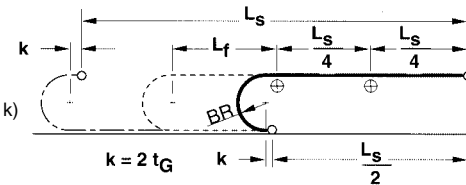
Unsupported configuration at $L_S \leq 2 (L_f - k)$ = Normal operation



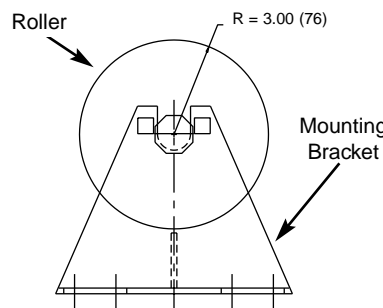
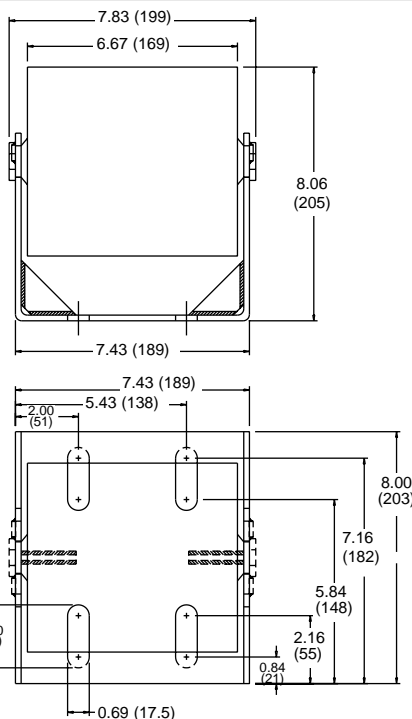
Configuration with 1 support roller at $L_S \leq 3 (L_f - k)$
Total travel capability increased by 50 %



Configuration with 2 support rollers at $L_S \leq 4 (L_f - k)$
Total travel capability increased by 100 %



In the case of longer travel length or unusual loads, the carrier should be supported by a carriage system with rollers running on supporting structural channels, i.e. see the RC-SYSTEMS™ clarification on the previous page.



Support Rollers

Capable of being used under the most adverse circumstances, KabelSchlepp's rugged, maintenance free support rollers are high quality, completely sealed design which utilize large tapered roller bearings for increased capacity, life and reduced vibration. Support rollers should be placed in a stationary position, per KabelSchlepp design guidelines to increase the cable and hose carrier's total travel capabilities.

All support rollers come complete with primed (gray) mounting brackets (see diagram) on which the mounting brackets are affixed to the mounting surface which is the responsibility of the customer.

Please consult factory for technical details as they relate to your specific application/job.

CARRIER DEVELOPMENT DATA SHEET

Please answer all of the questions listed below completely and accurately! Please print (or type) legibly!
Fax (1-414-354-1900), mail to KabelSchlepp, or submit this form online at <http://www.kabelschlepp.com/carrier/devsht.htm>

Required Customer Data:

Contact (Engineering) Name: _____
 Contact (Purchasing) Name: _____
 Company Name: _____
 Telephone Number: _____ Telefax Number: _____

Required Background Information:

Applications Description/Your Objective: _____
 Machine Name/Model/Type: _____
 This Machine is a: One Off: _____ Prototype: _____ In Production — Manufactured Per Month: _____

Required Application Data:

Any notable environmental influences: _____
 • Operating temperatures? _____ • Corrosives? _____
 • Red hot chips present? _____ • Abrasives? _____
 Total machine travel? _____ inch/mm (*circle either inch or mm*)
 Is the carrier fixed point located at the center of the total machine travel? _____ (yes/no)
 If not, please list the distance off-center _____ inch/mm (*circle either inch or mm*)
 Please identify the travel orientation, for example "Horizontal", "Circular", etc.: _____ (list)
 Operating Speed: Less than 5 ft/sec.? _____ Less than 10 ft/sec.? _____ Greater than 10 ft/sec.? _____
 If known or qualified, what is the machine's acceleration? _____ ft/sec.²

Carrier Contents:

Carrier Type Requested:

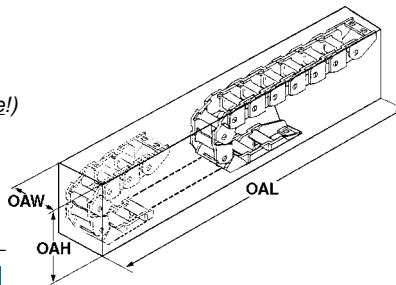
Please list all contents; cables and/or hoses, their respective weights, outside diameters and minimum bend radius.

Cables				Hoses			
No.	Weight	O.D.	Min. Bend Radius	No.	Weight	O.D.	Min. Bend Radius

Dimensional Limitations:

Carrier's operating envelope dimensions:
 (Please note: KSA allows an additional 2 inches (OAH) for operating clearance!)

OAW = _____ inches (_____ mm)
 OAL = _____ inches (_____ mm)
 OAH = _____ inches (_____ mm)



Describe any obstructions: _____

Accepted:



Requested Carrier Features and/or Accessories:

Enclosed Tube <input type="checkbox"/>	Hinge Opening Lids <input type="checkbox"/>	Dividers <input type="checkbox"/>
Open Design <input type="checkbox"/>	Hinge/Twist Opening Bars <input type="checkbox"/>	See PRINT Attached <input type="checkbox"/>
Cable/Hose Clamps <input type="checkbox"/>	Guide Channels/Support Trays <input type="checkbox"/>	Support Rollers <input type="checkbox"/>